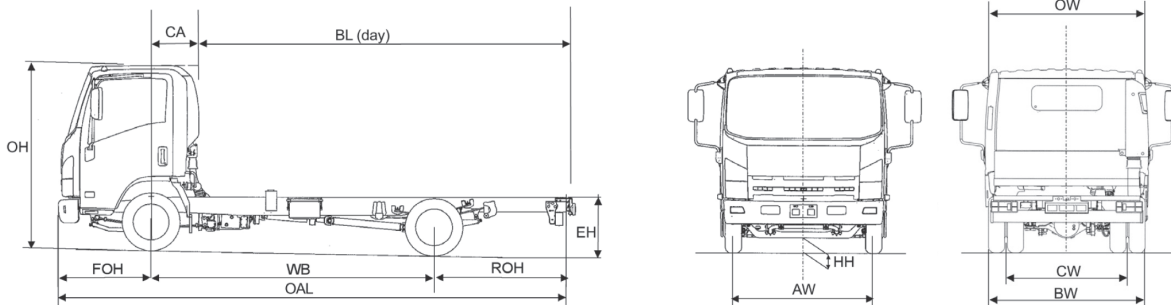




specifications:

Isuzu 'Forward' N65.150(E)

6.5T GVW / EURO VI-E (Easyshift transmission) 4x2 rigid



Pictures shown are for illustration purposes only.

Axle weights (kg)		
UK standard vehicle plated weights (kg)	GW	6500
	GTW (Standard)	8250
	GTW (Optional)	10000
UK Axle design weights (kg)	Front	3100
	Rear	4600

Weights (kg) PROVISIONAL		
Cab type		day
Wheelbase	WB	3365
Vehicle Mass Unladen	Front	1658
	Rear	856
Total		2514
GVW		6500
Body & Payload Allowance		3986
Max. Permissible Trailer Weight		3500

Dimensions (mm)		
Overall Length	OAL	6100
Overhang - Front	FOH	1110
Overhang - Rear	ROH	1595
Cab Gap	CB	157
C/L Front Axle to Rear of Cab	CA	573
Recommended Body Length	BL	4267
Chassis Frame Width		850
Recommended Body Width		2286
Recommended Maximum Body Width		2500*
Cab Width	OW	2040
Overall Height (Unladen)	OH	2230
Chassis Height (Unladen)	EH	740
Minimum Road Clearance	HH	175
Track - Front	AW	1680
Track - Rear	CW	1525
Rear Axle Width	BW	2040

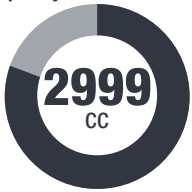
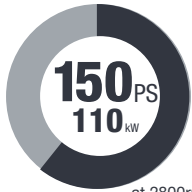
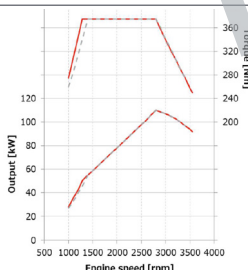
*Wide mirror arms apply at extra cost.



1. Unladen weights excludes driver, fuel and AdBlue®. Includes spare wheel + carrier. (Tolerance +/- 3%). 2. Body lengths are given as a guide only. Bodybuilders are responsible for ensuring all legal requirements are met. 3. Maximum body lengths are calculated to remain within the overhang ratio of 60% of the wheel base. Cab gaps may vary. 4. Isuzu Truck (UK) Ltd. shall have no liability whatsoever should the information supplied have incorrect data, descriptions or illustrations.

N65.150(E) Mechanical Specification (standard equipment)




EURO VI-E

POWER & TORQUE CHASSIS DETAILS

Engine	
Make & model:	4JZ1 - E6-E Isuzu turbo intercooled DOHC 4 cylinder diesel with engine side DPD & SCR.
Bore x stroke:	95.4 x 104.9mm
Capacity:	Max Power:
	
Transmission	
Make & model:	Electro hydraulic controlled 6 speed synchromesh MYY6Z with fully automated and sequential shift modes.
Ratios:	1st - 5.979; 2nd - 3.434; 3rd - 2.040; 4th - 1.379; 5th - 1.000; 6th - 0.708; Reverse - 5.701
Rear Axle Ratio:	4.556:1
Clutch	
Type:	Fluid coupling torque converter type with lock-up clutch.
Power & Torque	
	

Electrical	
Type:	2x12V, 595CCA, 65Ah batteries (24V) with 90A alternator.
Tyres/Wheels	
Tyres:	215/75 R17.5 radial.
Wheels:	6.00J x 17.5, 6-stud.
Spare:	1 x wheel and tyre.
Frame	
Type:	Parallel ladder type channel section straight side rails, rivet less upper flange.
Axles	
Front:	Reverse Elliott I-Beam.
Rear:	Banjo fully floating.
Suspension	
Front:	Parabolic alloy steel springs with hydraulic shock absorbers and anti roll bar.
Rear:	Semi-elliptical alloy steel springs with hydraulic shock absorbers and anti roll bar.
Brakes	
System:	Vacuum servo assisted hydraulic dual line with ABS, EBD, EVSC and ASR. Exhaust brake. Advanced Emergency Braking System (AEBS) for pedestrians.
Front:	293mm ventilated discs with asbestos free pads.
Rear:	293mm ventilated discs with asbestos free pads.
Park:	Mechanical drum brake rear of transmission.
Fuel Tank	
Capacity:	AdBlue®:
	

CAB FEATURES

Cab Exterior		Steering	
Type:	Hexapod, white all-steel with roof outline markers.	Features:	Recirculating ball type with full integral hydraulic power assistance. Tilt and telescopic steering column.
Features:	Manual tilt to 45 deg. Tinted windscreen. Chrome radiator grille. Plastic resin non-slip entry steps. 90 deg. opening doors. Zinc galvanised frame structure. Steel reinforced composite front bumper with fog and daytime running lamps. Two halogen head lamps with indicators. Front mudguards with spray suppression. Aluminium rear under run bar protection (R58.03)	Instruments	
		Features:	Speedometer with odometer & trip. Rev counter. Fuel gauge. Engine coolant temperature. Multi-information display provides information on servicing, emissions and fuel economy. Digital Tachograph 4.0 Stoneridge.
Cab Interior		Switches & Electrical	
Features:	Flame-resistant interior trim. Vinyl floor matting. Pillar mounted entrance grab handles both sides. Driver & passenger SRS airbags.	Features:	Combination stalk incorporating headlamps, indicators, fog lamps, washers and wipers, and exhaust brake. Auto lights. Steering wheel horn. Engine idle control. Headlamp levelling. Engine quick warm up. Cigarette lighter. Reverse warning. DPD. EVSC, ASR and LDWS control. Electronic vehicle speed limiter set at 56 mph (90 kph). First gear start. Economy mode. Hazard warning lights. Kenwood DAB Radio with Bluetooth (Sat Nav option available).
Seats (cloth)			
Features:	Driver's fully adjustable suspension seat with head restraint. Dual split passenger seat, folding back centre with tray. Driver and outer passenger retractable diagonal seat belts with pre-tensioner. Centre seat lap belt. Upholstery shade upgrade.		
Warning/Indicator Lamps		Warning/Indicator Lamps	
Features:		Features:	
		Battery charge. Oil pressure. Oil level check. Low fuel. Glow plug operation. High beam and indicators. Park brake warning. Fuel/water separator. Check engine. DPD operation. Engine overheat. AdBlue® level. EVSC, LDWS, ABS. Exhaust brake operation. Front and rear fog lights. Seat belt warning and reminder. Brake fluid level. SRS air bag. Brake vacuum loss. Gear position indicator. Cab tilt lock warning. Airbag pictogram. AEBS warning.	
Tool Kit		Tool Kit	
Features:		Features:	
		Jack with a small selection of hand tools.	

SAFETY & SECURITY

R29 cab strength:	Complies with ECE-R29 cab strength standard.
Central locking:	Central locking with remote keyless entry and immobiliser.
Lane departure warning system:	Stereo camera monitor, alerts driver with a warning buzzer and LCD monitor.
Advanced Emergency Braking System (AEBS):	Utilizes stereo camera system to reduce collision damage.

WARRANTY	
All chassis cabs come with a 3 year unlimited mileage warranty and roadside assistance as standard. Terms and conditions apply.	
Isuzu-backed Repair and Maintenance contracts available upon request.	

For further information please contact your local dealer or phone us direct:

01707 282930 | www.isuzutruck.co.uk

