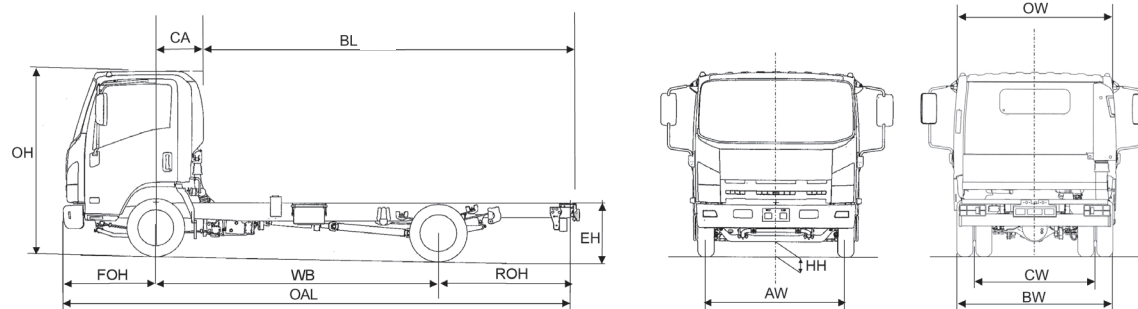
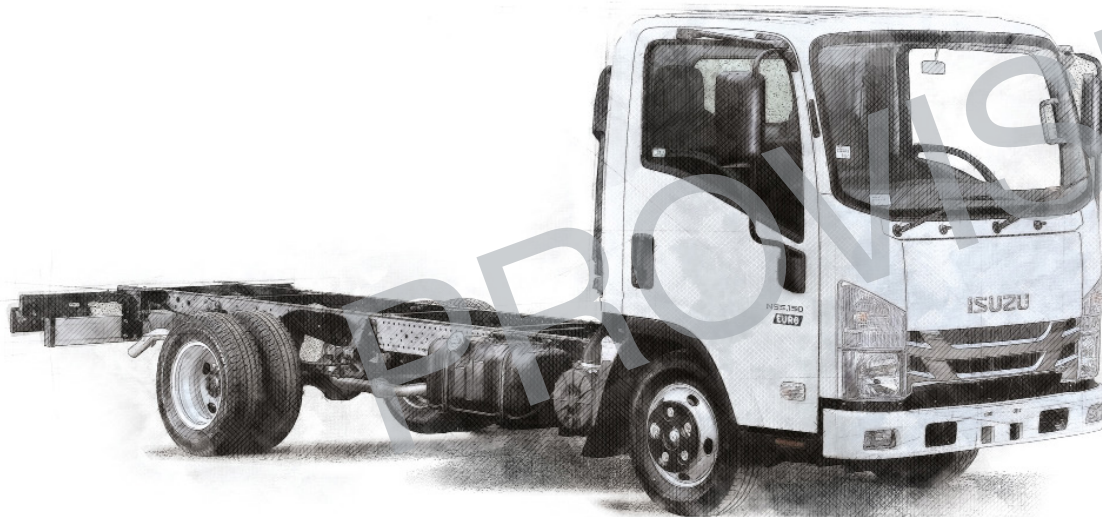




**specifications:**

# Isuzu 'Forward' N55.150(N)

5.5T GVW / EURO VI-E 4x2 rigid chassis with narrow cab



Pictures shown are for illustration purposes only.

Axle weights (kg)		
<b>UK standard vehicle plated weights (kg)</b>	GVW	<b>5500</b>
	GTW (Standard)	<b>8250</b>
	GTW (Optional)	<b>9000</b>
<b>UK Axle design weights (kg)</b>	Front	<b>2100</b>
	Rear	<b>3980</b>

Weights (kg) PROVISIONAL		
Cab type		day
Wheelbase	WB	3350
Vehicle Mass Unladen	Front	1600
	Rear	772
<b>Total</b>		<b>2372</b>
GVW		5500
<b>Body &amp; Payload Allowance</b>		<b>3128</b>
Max. Permissible Trailer Weight		3500

Dimensions (mm)		
Overall Length	OAL	6005
Overhang - Front	FOH	1100
Overhang - Rear	ROH	1555
Cab Gap	CB	157
C/L Front Axle to Rear of Cab	CA	463
Recommended Body Length	BL	4267
Chassis Frame Width		700
Recommended Body Width		1945
Recommended Maximum Body Width		2275*
Cab Width	OW	1770
Overall Height (Unladen)	OH	2160
Chassis Height (Unladen)	EH	725
Minimum Road Clearance	HH	195
Track - Front	AW	1475
Track - Rear	CW	1425
Rear Axle Width	BW	1855

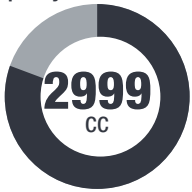
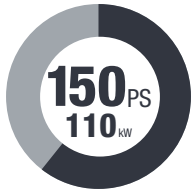
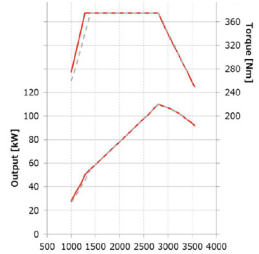
\*Wide mirror arms apply at extra cost.



1. Unladen weights excludes driver, fuel and AdBlue®. Includes spare wheel + carrier. (Tolerance +/- 3%). 2. Body lengths are given as a guide only. Bodybuilders are responsible for ensuring all legal requirements are met. 3. Maximum body lengths are calculated to remain within the overhang ratio of 60% of the wheel base. Cab gaps may vary. 4. Isuzu Truck (UK) Ltd. shall have no liability whatsoever should the information supplied have incorrect data, descriptions or illustrations.

# N55.150(N) Mechanical Specification (standard equipment)

EURO VI-E

## POWER & TORQUE CHASSIS DETAILS

<b>Engine</b>	
<b>Make &amp; model:</b>	4JZ1 - E6-E Isuzu turbo intercooled DOHC 4 cylinder diesel with engine side DPD & SCR.
<b>Bore x stroke:</b>	95.4 x 104.9mm
<b>Capacity:</b>	<b>Max Power:</b>
	
<b>Transmission</b>	
<b>Make &amp; model:</b>	Isuzu 6 speed manual synchromesh MYY6Z with overdrive.
<b>Ratios:</b>	1st - 5.979; 2nd - 3.434; 3rd - 2.040; 4th - 1.379; 5th - 1.000; 6th - 0.708 Reverse - 5.701
<b>Rear Axle Ratio:</b>	4.300:1
<b>Clutch</b>	
<b>Type:</b>	300mm diaphragm type with hydraulic actuation.
<b>Power &amp; Torque</b>	
	

<b>Electrical</b>	
<b>Type:</b>	2x12V, 595CCA, 65Ah batteries (24V) with 60A alternator.
<b>Tyres/Wheels</b>	
<b>Tyres:</b>	205/75 R16 radial.
<b>Wheels:</b>	5.50J x 16, 5-stud.
<b>Spare:</b>	1 x wheel and tyre.
<b>Frame</b>	
<b>Type:</b>	Parallel ladder type channel section straight side rails, riveted upper flange.
<b>Axles</b>	
<b>Front:</b>	Reverse Elliott I-Beam.
<b>Rear:</b>	Banjo fully floating.
<b>Suspension</b>	
<b>Front:</b>	Semi-elliptical alloy steel springs with hydraulic shock absorbers and anti roll bar.
<b>Rear:</b>	Semi-elliptical alloy steel springs with hydraulic shock absorbers.
<b>Brakes</b>	
<b>System:</b>	Vacuum servo assisted hydraulic dual line with ABS, EBD, EVSC and ASR. Exhaust brake. Advanced Emergency Braking System (AEBS) for pedestrians.
<b>Front:</b>	293mm ventilated discs with asbestos free pads.
<b>Rear:</b>	293mm ventilated discs with asbestos free pads.
<b>Park:</b>	Mechanical drum brake rear of transmission.
<b>Fuel Tank</b>	
<b>Capacity:</b>	
<b>AdBlue®:</b>	

## CAB FEATURES

<b>Cab Exterior</b>	
<b>Type:</b>	Hexapod, white, all-steel.
<b>Features:</b>	Manual tilt to 45 deg. Tinted windscreen. Chrome radiator grille. Plastic resin non-slip entry steps. 90 deg. opening doors. Zinc galvanised frame structure. Steel reinforced composite front bumper with fog and daytime running lamps. Two halogen head lamps with indicators. Front mudguards with spray suppression. Aluminium rear under run bar protection (R58.03)
<b>Cab Interior</b>	
<b>Features:</b>	Flame-resistant interior trim. Vinyl floor matting. Pillar mounted entrance grab handles both sides. Driver & passenger SRS airbags.
<b>Seats (cloth)</b>	
<b>Features:</b>	Driver's fully adjustable suspension seat with head restraint. Dual passenger seat with folding back. Driver and outer passenger retractable diagonal seat belts with pre-tensioner. Centre seat lap belt. Upholstery shade upgrade.
<b>Vision</b>	
<b>Features:</b>	Large foldable mirrors. Interior rear view mirror on collapsible mounting. Driver and passenger sun visors. Deep cut side windows to reduce blind spots. Electric windows with driver control and lock.
<b>Steering</b>	
<b>Features:</b>	Recirculating ball type with full integral hydraulic power assistance. Tilt and telescopic steering column.
<b>Instruments</b>	
<b>Features:</b>	Speedometer with odometer & trip. Rev counter. Fuel gauge. Engine coolant temperature. Multi-information display provides information on servicing, emissions and fuel economy. Digital Tachograph 4.0 Stoneridge.
<b>Switches &amp; Electrical</b>	
<b>Features:</b>	Combination stalk incorporating headlamps, indicators, fog lamps, washers and wipers, and exhaust brake. Auto lights. Steering wheel horn. Engine idle control. Headlamp levelling. Engine quick warm up. Cigarette lighter. Reverse warning. DPD. EVSC, ASR and LDWS control. Electronic vehicle speed limiter set at 56 mph (90 kph). Hazard warning lights. Kenwood DAB Radio with Bluetooth (Sat Nav option available).
<b>Warning/Indicator Lamps</b>	
<b>Features:</b>	Battery charge. Oil pressure. Oil level check. Low fuel. Glow plug operation. High beam and indicators. Park brake warning. Fuel/water separator. Check engine. DPD operation. Engine overheat. AdBlue® level. EVSC, LDWS, ABS. Exhaust brake operation. Front and rear fog lights. Seat belt warning and reminder. Brake fluid level. SRS air bag. Brake vacuum loss. Cab tilt lock warning. Airbag pictogram. AEBS warning.
<b>Tool Kit</b>	
<b>Features:</b>	Jack with a small selection of hand tools.

## SAFETY & SECURITY

<b>R29 cab strength:</b>	Complies with ECE-R29 cab strength standard.
<b>Central locking:</b>	Central locking with remote keyless entry and immobiliser.
<b>Lane departure warning system:</b>	Stereo camera monitor, alerts driver with a warning buzzer and LCD monitor.
<b>Advanced Emergency Braking System (AEBS):</b>	Utilizes stereo camera system to reduce collision damage.

<b>WARRANTY</b>	
All chassis cabs come with a 3 year unlimited mileage warranty and roadside assistance as standard. Terms and conditions apply.	
Isuzu-backed Repair and Maintenance contracts available upon request.	

For further information please contact your local dealer or phone us direct:

**01707 282930 | www.isuzutruck.co.uk**

